

YOUR TURN-KEY CABINET SOLUTION FROM MASTERBRAND® CABINETS



CONTRACTOR'S
CHOICE

MasterBrand
Cabinets, Inc.



CLARKSON BIRCH ROUGE

QUALITY MADE AFFORDABLE.

For good-looking, long-lasting cabinets that easily fit within your budget, there's only one choice. Contractor's Choice cabinetry has it all—quality craftsmanship, appealing design and, most importantly, affordability. Plus, every inch is backed by a 1-year warranty from MasterBrand, one of the most respected names and largest service networks in the cabinet industry. The choice is easy. Take a closer look at Contractor's Choice today.



MasterBrand Cabinets' sound environmental management and sustainable manufacturing practices have been approved by the Kitchen Cabinet Manufacturers Association to meet the requirements of the KCMA Environmental Stewardship Program ESP (Jan. 2006)

Contractor's Choice cabinetry complies/will comply with Phase I and Phase II emissions standards of the California Air Resources (CARB) Airborne Toxic Control Measure (ATCM) - Title 17. California Code of Regulations Section 93120.

COME HOME TO MASTERBRAND

MasterBrand Cabinets is the second largest cabinet manufacturer in North America, part of the \$7.6 billion Fortune Brands company. Founded in 1954 as United Cabinet Company, today we manufacture and distribute over a dozen major cabinet brands nationwide – including Contractor's Choice – through a network of over 20 plants and distribution centers. With over 9,000 associates we service the redevelopment and new construction segments with the highest quality products, delivered on time and complete, at fair prices.

MasterBrand Cabinets is part of the Kitchen Cabinet Manufacturers Association (KCMA) and the National Kitchen and Bath Association (NKBA). Contractor's Choice cabinetry carries the ANSI/KCMA A161.1 quality assurance certification and meets the requirements set forth in section 12370 of the HUD GUIDE SPECIFICATIONS for PUBLIC AND INDIAN HOUSING (Sept. 1993) normal/elderly use.



**CONTRACTOR'S
CHOICE**



NEWBERRY BIRCH AUTUMN

HAMMOND

oak | wheat finish

- Standard construction (13B - wheat)
All Plywood construction (14B - wheat)
- Veneered recessed center panel door
- Beveled profile on the inside and outside of door and drawer fronts



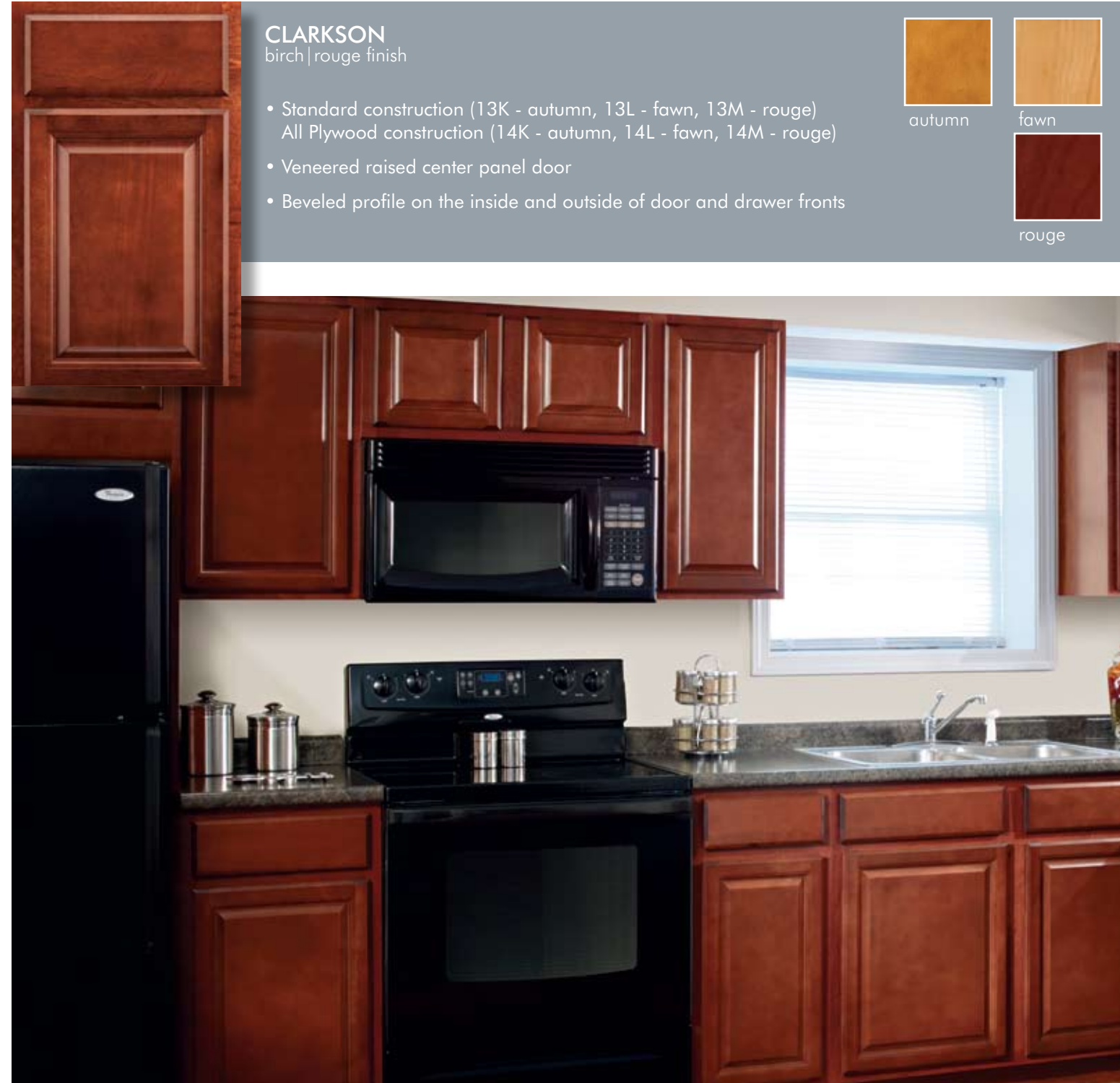
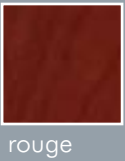
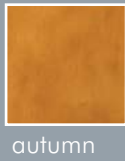
VALUE YOU CAN DEPEND ON.

Contractor's Choice cabinets are built solid to hold up to the rigors of multi-family living. We know our handiwork will be put to the test. So we put more into them, from manufacture through final install. Rest assured, our cabinets—and guarantee—hold their own.

CLARKSON

birch | rouge finish

- Standard construction (13K - autumn, 13L - fawn, 13M - rouge)
All Plywood construction (14K - autumn, 14L - fawn, 14M - rouge)
- Veneered raised center panel door
- Beveled profile on the inside and outside of door and drawer fronts



NEWBERRY

birch | autumn finish

- Standard construction (13F - autumn, 13G - fawn, 13J - rouge)
All Plywood construction (14F - autumn, 14G - fawn, 14J - rouge)
- Veneered recessed center panel door
- Beveled profile on the inside and outside of door frames and drawer fronts



STAFFORD
oak | wheat finish

- Standard construction (13D - wheat)
All Plywood construction (14D - wheat)
- Veneered raised center panel door
- Beveled profile on inside and outside of door frames and drawer fronts



wheat



BARTLETT
thermofoil | white

- Standard construction (13E - white)
All Plywood construction (14E - white)
- Thermofoil heat-formed and glued over a 5/8" MDF core to create a tough, durable surface
- Raised center panel profile with beveled edges on the outside of the door frame and drawer fronts



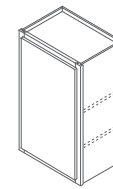
white



WALL CABINETS

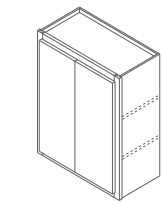
NOTE: Cabinet configurations may vary by size and door style. Contractor's Choice reserves the right to alter design, specifications and material without obligation to make similar changes to products previously manufactured.

SINGLE DOOR 14", 18", 24", 30", 36" & 42" High, 12" Deep



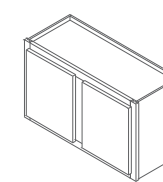
- | | | | |
|-------|-------|-------|-------|
| W2114 | W0930 | W1236 | W1542 |
| W2414 | W1230 | W1536 | W1842 |
| W2118 | W1530 | W1836 | W2142 |
| W2418 | W1830 | W2136 | W2442 |
| W2124 | W2130 | W2436 | |
| W2424 | W2430 | W1242 | |

DOUBLE DOOR 30", 36" & 42" High 12" Deep



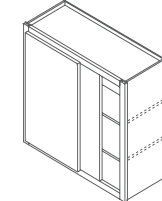
- | | | |
|-------|-------|-------|
| W2730 | W4830 | W3042 |
| W3030 | W2736 | W3342 |
| W3330 | W3036 | W3642 |
| W3630 | W3336 | |
| W3930 | W3636 | |
| W4230 | W2742 | |

DOUBLE DOOR 12", 14", 18" & 24" High, 12" Deep



- | | | |
|-------|-------|-------|
| W3012 | W3018 | W3324 |
| W3612 | W3318 | W3624 |
| W3014 | W3618 | W3924 |
| W3314 | W3918 | W4224 |
| W3614 | W4218 | |
| W3914 | W3024 | |

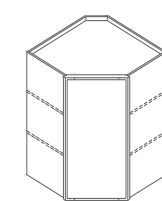
SQUARE CORNER 24", 30", 36" & 42" High



- | | | |
|--------|---------|--------|
| SC3024 | SC4230* | SC2442 |
| SC3624 | SC4830* | SC3042 |
| SC2430 | SC2436 | SC3642 |
| SC3030 | SC3036 | |
| SC3630 | SC3636 | |

* Double Door

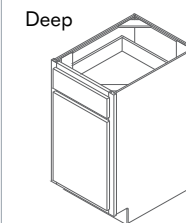
DIAGONAL CORNER 24", 30", 36" & 42"



- | |
|--------|
| DC2424 |
| DC2430 |
| DC2436 |
| DC2442 |

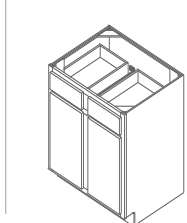
BASE & TALL CABINETS

SINGLE DOOR 35" High, 23 3/4" Deep



- | | |
|-----|-----|
| B09 | B21 |
| B12 | B24 |
| B15 | |
| B18 | |

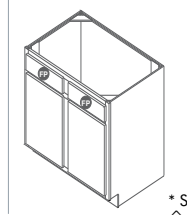
DOUBLE DOOR 35" High, 23 3/4" Deep



- | | |
|------|-----|
| B27* | B39 |
| B30 | B42 |
| B33 | B45 |
| B36 | B48 |

* Single Drawer

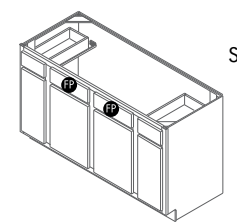
SINK BASE 35" High, 23 3/4" Deep



- | |
|-------|
| SB24* |
|-------|

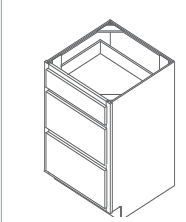
* Single Door/Drawer Front
^ Single Drawer Front

SINK BASE 35" High, 23 3/4" Deep



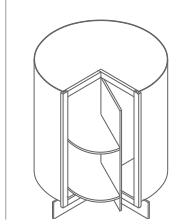
- | |
|------|
| SB60 |
|------|

THREE DRAWER 35" High, 23 3/4" Deep



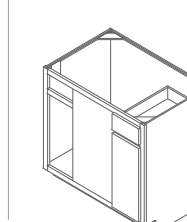
- | |
|------|
| DB12 |
| DB15 |
| DB18 |
| DB24 |

SQUARE CORNER ROT 35" High



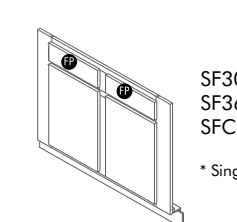
- | |
|-------|
| SCR36 |
|-------|

SQUARE CORNER 35" High, 23 3/4" Deep



- | |
|-------|
| SCB36 |
| SCB42 |
| SCB48 |

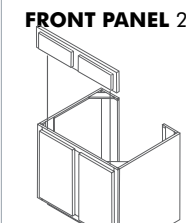
SINK FRONT 35" High



- | |
|--------|
| SF30* |
| SF36 |
| SFC36* |

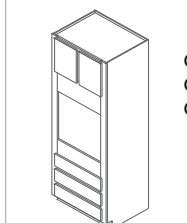
* Single Door

REMOVABLE SINK BASE WITH FRONT PANEL 23 3/4" Deep



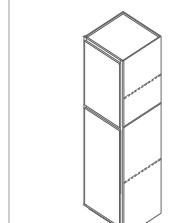
- | |
|-------|
| RSB30 |
| RSB36 |

OVEN CABINET 84", 90" & 96" High, 30" Wide



- | |
|--------|
| OC33 |
| OC3390 |
| OC3396 |

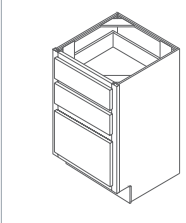
UTILITY CABINET 84", 90" & 96" High



- | |
|--------------|
| U18 L or R |
| U1890 L or R |
| U1896 L or R |
| U24 L or R |
| U2490 L or R |
| U2496 L or R |

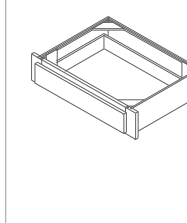
VANITY CABINETS

VANITY DRAWER BASE 30" High, 21" Deep



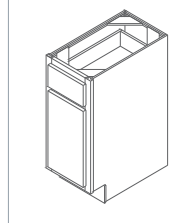
- | |
|-------|
| VDB12 |
| VDB15 |
| VDB18 |

VANITY DRAWER 30" Wide, 21" Deep
Trimable 3"



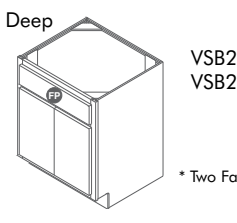
- | |
|-------|
| VDT30 |
|-------|

VANITY BASE 30" High, 21" Deep



- | |
|------|
| VB12 |
| VB15 |

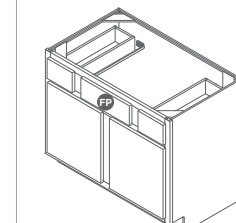
VANITY SINK BASE 30" High, 21" Deep



- | |
|--------|
| VSB24 |
| VSB30* |
| VSB27 |
| VSB33* |

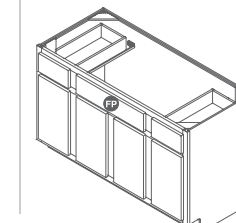
* Two False Drawer Fronts

VANITY SINK BASE 30" High, 21" Deep



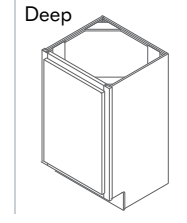
- | |
|-------|
| VSB36 |
| VSB42 |

VANITY SINK BASE 30" High, 21" Deep



- | |
|-------|
| VSB48 |
|-------|

VANITY SINK BASE 30" High, 16" Deep



- | |
|---------|
| VSB1816 |
|---------|

SAMPLE FRONTS

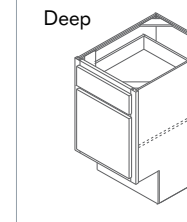
SAMPLE FRONTS
SF



BASE & TALL CABINETS

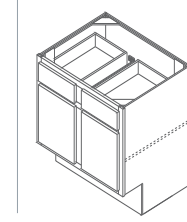
See Contractor's Choice Price/Spec Guide for complete details

SINGLE DOOR 32 1/2" High, 23 3/4" Deep



- | |
|-------|
| B12UD |
| B15UD |
| B18UD |
| B21UD |

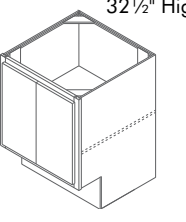
DOUBLE DOOR 32 1/2" High, 23 3/4" Deep



- | | |
|----------|-------|
| B24DDUD* | B42UD |
| B27UD* | B45UD |
| B30UD | B48UD |
| B33UD | |
| B36UD | |
| B39UD | |

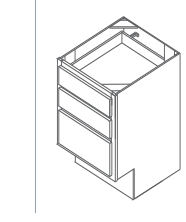
* Single Drawer

FULL HEIGHT DOOR 32 1/2" High 23 3/4" Deep



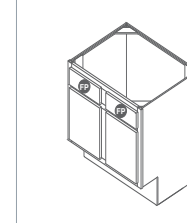
- | |
|-----------|
| B24DDFHUD |
| B30FHUD |
| B33FHUD |
| B36FHUD |

THREE DRAWER 32 1/2" High, 23 3/4" Deep



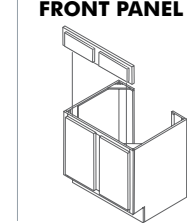
- | |
|--------|
| DB12UD |
| DB15UD |
| DB18UD |
| DB24UD |

SINK/RANGE 32 1/2" High, 23 3/4" Deep



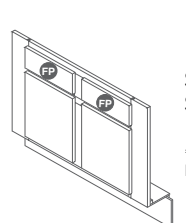
- | |
|--------|
| SB30UD |
| SB36UD |

REMOVABLE SINK BASE WITH FRONT PANEL 32 1/2" High



- | |
|---------|
| RSB30UD |
| RSB36UD |

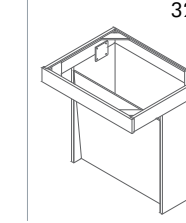
SINK FRONTS 32 1/2" High



- | |
|---------|
| SF30UD* |
| SF36UD |

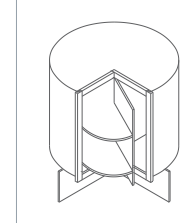
* Single Door/Drawer Front

SINK BASE UNIT WITH FRONT PANEL 32 1/2" High 23 3/4" Deep



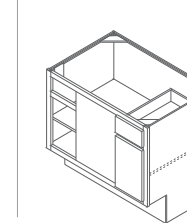
- | |
|--------|
| SU30UD |
| SU36UD |

SQUARE CORNER ROT 32 1/2" High



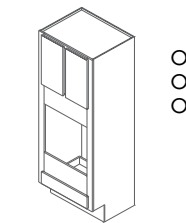
- | |
|---------|
| SCR36UD |
|---------|

SQUARE CORNER 32 1/2" High 23 3/4" Deep



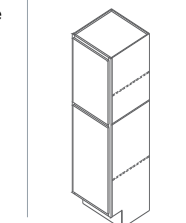
- | |
|---------|
| SCB36UD |
| SCB42UD |
| SCB45UD |

OVEN CABINET 84", 90" & 96" High 33" Wide



- | |
|----------|
| OC33UD |
| OC3390UD |
| OC3396UD |

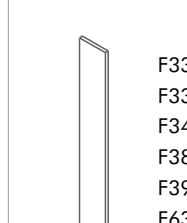
UTILITY CABINET 84", 90" & 96" High



- | |
|---------|
| U18UD |
| U1890UD |
| U1896UD |

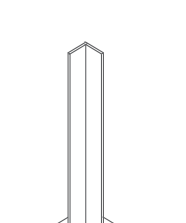
ACCESSORIES

FILLERS 3", 6" Wide



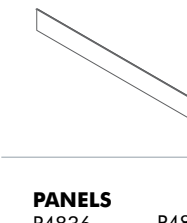
- | |
|--------|
| F330 |
| F331 |
| F342 |
| F380 |
| F392 |
| F631 |
| F324UD |

CORNER FILLERS



- | |
|----------|
| FBC3X3UD |
|----------|

TOEKICKS



- | |
|-------------|
| TOEKICK* |
| TOEKICKPLY |
| TOEKICK8* |
| TOEKICKPLY8 |
| TOEKICKUD |
| TOEKICK8UD |

OUTSIDE CORNER MOULDING
MOCW8

SCRIBE WOOD MOULDING
MSW8

STRAIGHT VALANCE High
V549ST
V573ST

PANELS

- | | | | | | | | |
|-------|--------|--------|--------|---------|------------|-------|---------|
| P4836 | PA4836 | PA4896 | PP9635 | PEPR335 | PEPRPLY335 | PSFEP | PSFEPLY |
|-------|--------|--------|--------|---------|------------|-------|---------|

STANDARD CONSTRUCTION

WALL CABINETS



- 1/2" furniture board top.
- 1/2" furniture board adjustable shelves (15 lbs. maximum weight/sq.ft.).
- 3/4" x 1 1/2" solid wood face frame.
- 3/8" furniture board sides and back.
- 1/2" furniture board bottom.
- Cabinet interior features natural maple laminate. (Bartlett features white laminate.)
- Fully concealed self-closing, adjustable steel hinges.

BASE CABINETS



- Four furniture board corner braces.
- 3/8" furniture board back.
- 3/4" x 1 1/2" solid wood face frame with 3" center stile.
- 1/2" half-depth furniture board shelf.
- 3/8" furniture board bottom and sides.
- 3/8" x 4" high furniture board recessed toe-kick (recessed 3 3/8" deep). Recessed toe-kick is unfinished furniture board and requires toe-kick cover.
- Cabinet interior features natural maple laminate. (Bartlett features white laminate.)
- Fully concealed self-closing, adjustable steel hinges.

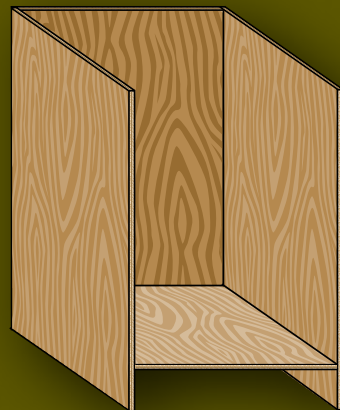
DRAWERS



- Furniture board drawer with 1/2" sides and back and 3/8" bottom.
- 20" deep drawer box with stapled butt joint construction.
- Drawer bottom stapled into sides, front and back.
- Self-closing, epoxy-coated guides for smooth, quiet action. (Rated at 100 lbs. capacity per drawer.)
- Adjustable side-mount drawer guides with double rails for more stability.
- Built-in drawer stop.

ALL-PLYWOOD CONSTRUCTION

When needed for projects that require ALL-PLYWOOD CONSTRUCTION



WALL CABINETS



- 1/2" plywood top and bottom
- 1/2" plywood adjustable shelves (15 lbs. maximum weight/sq.ft.)
- 3/4" x 1 1/2" solid wood face frame
- 3/8" plywood sides and back
- Cabinet interior features natural maple laminate (Bartlett thermofoil features white laminate.)
- Fully concealed self-closing, adjustable steel hinges

BASE CABINETS

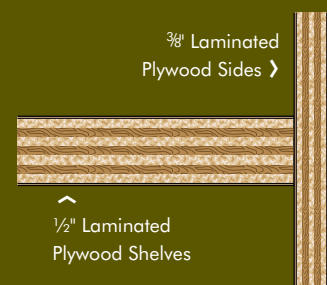


- Two plywood stretcher rails
- 3/8" plywood back, bottom and sides
- 3/4" x 1 1/2" solid wood face frame with 3" center stile
- 1/2" half-depth plywood shelf
- 3/8" x 4" high plywood recessed toe-kick (recessed 3 3/8" deep) Recessed toe-kick is unfinished plywood and requires toe-kick cover.
- Cabinet interior features natural maple laminate (Bartlett features white laminate.)
- Fully concealed self-closing, adjustable steel hinges

DRAWERS



- All wood drawer with 1/2" sides and back and 3/8" bottom
- All styles feature natural wood finish
- 20" deep drawer box with stapled butt joint construction
- Drawer bottom stapled into sides, front and back
- Self-closing, epoxy-coated guides for smooth, quiet action (Rated at 100lbs. capacity per drawer.)
- Adjustable side-mount drawer guides with double rails for more stability
- Built-in drawer stop



CONTRACTOR'S
CHOICE



Contractor's Choice is your dedicated partner in providing and delivering timeless cabinetry solutions with lasting quality for your multi-family living complex.

MasterBrand Cabinets, Inc.
Printed in USA

Product photography and illustrations have been reproduced as accurately as printing technologies permit. To ensure highest satisfaction, we strongly suggest you view an actual sample for best color wood grain and finish representation.